

PRIME RETAIL SPACE FOR LEASE

1654 Avenue Road, Toronto, ON



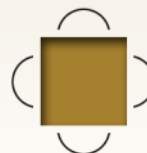
- Located on posh Avenue Road just north of Lawrence
- 8,412 square feet, over 40 feet of frontage
- Onsite parking, rear loading possible
- Ideal for large format retail. Many other uses permitted including wellness centre, medical and health care, other service related uses, daycare facility, school, entertainment uses and restaurant
- Net Rent \$35.00 per square foot
- TMI \$19.00 per square foot (2017)

John Amos

Sales Representative
(416)523-1525

Lisa Carvalho

Broker
(416)476-6896



Goudy Real Estate Corp.

Real Estate Brokerage
Commercial Real Estate Sales & Leasing

505 Hood Rd., Unit 20

Markham, ON L3R 5V6

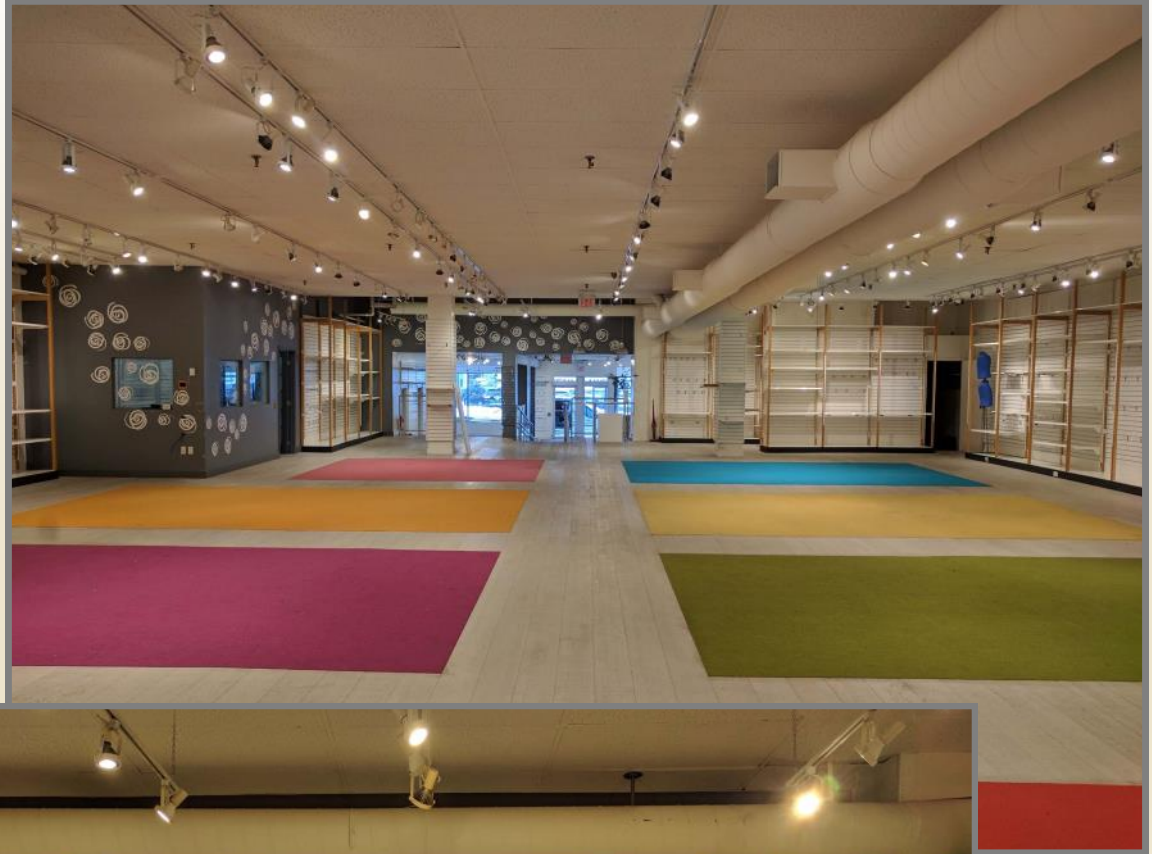
T: (905)477-3000

www.goudyrealestatecorp.com

The information contained herein has been provided to Goudy Real Estate Corp. by others. We do not warrant its accuracy. You are advised to independently verify the information prior to submitting an Offer and to provide for sufficient due diligence in an offer. The information contained herein may change from time to time without notice. The property may be withdrawn from the market at any time without notice.

1654 Avenue Rd

Interior Photos



1654 Avenue Road

Aerial Map



1654 Avenue Road

Floor Plan

