

# NEW BUILD FOR LEASE

400 Highbury Ave.,  
ST. THOMAS, ON



## Lyn Ogilvie

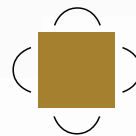
Sales Representative

Goudy Real Estate Corp.

Real Estate Brokerage

(416) 996-2177

lyn@goudyrealestatecorp.com



**Goudy Real Estate Corp.**

Real Estate Brokerage

Commercial Real Estate

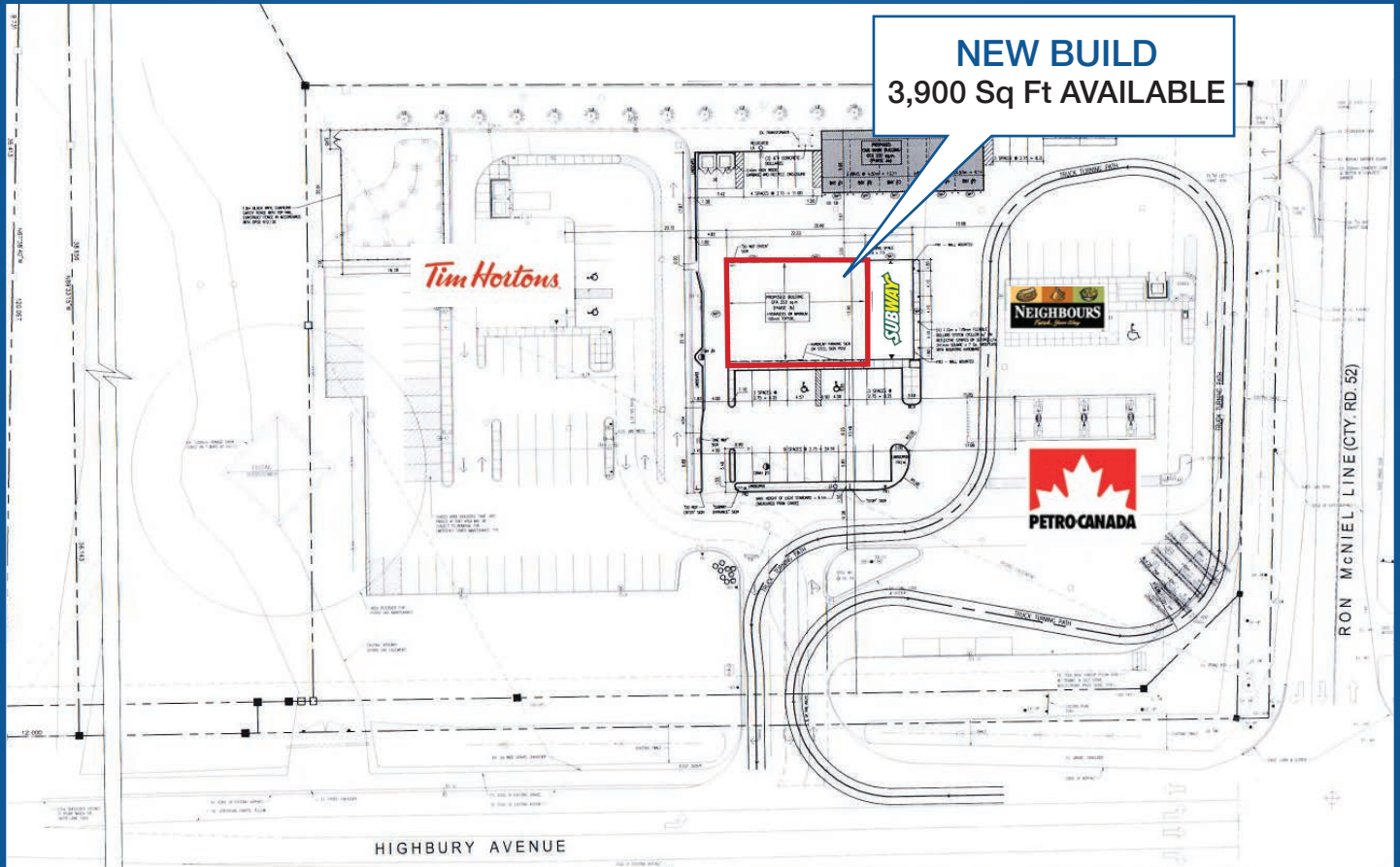
Sales & Leasing

505 Hood Rd., Unit 20, Markham, ON L3R 5V6 | (905) 477-3000

The information contained herein has been provided to Goudy Real Estate Corp. by others. We do not warrant its accuracy. You are advised to independently verify the information prior to submitting an Offer and to provide for sufficient due diligence in an offer. The information contained herein may change from time to time without notice. The property may be withdrawn from the market at any time without notice.

# SITE DETAILS

400 Highbury Ave., St. Thomas, ON



**PROPERTY LOCATION & DETAILS:** NEW building to be built on Petro Canada gas site, space can be divided. Ample parking, great visibility with pylon signage available and possibility of a Drive Thru.

**SPACE AVAILABLE:** 3,900 sq.ft.

**DESIRED USES:** Perfect for fast food.

**NEIGHBOURING TENANTS:** Current tenants include Subway, Tim Horton's and Neighbours Convenience

**RENTS:** \$25 net, \$9.00 TMI