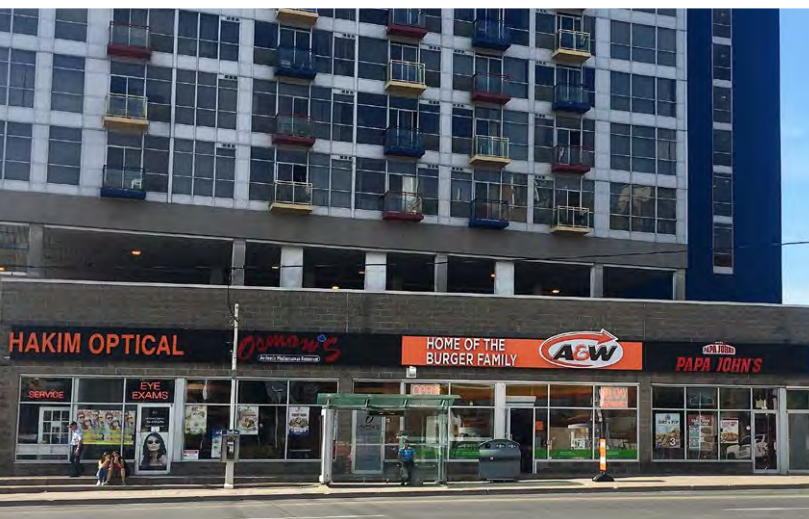


SHOPPES ON ROGERS FOR LEASE

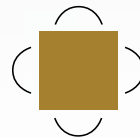
KEELE STREET & ROGERS ROAD, TORONTO, ON



Cory Rosen

Vice President,
Sales Representative
Goudy Real Estate Corp.
Real Estate Brokerage
(416) 523-7749
crosen@rogers.com

PARADISE
DEVELOPMENTS®



Goudy Real Estate Corp.
Real Estate Brokerage
Commercial Real Estate
Sales & Leasing

(905) 477-3000
www.goudyrealestatecorp.com

The information contained herein has been provided to Royal LePage Real Estate Services Ltd., Brokerage and Goudy Real Estate Corp. by others. We do not warrant its accuracy. You are advised to independently verify the information prior to submitting an Offer and to provide for sufficient due diligence in an offer. The information contained herein may change from time to time without notice. The property may be withdrawn from the market at any time without notice.

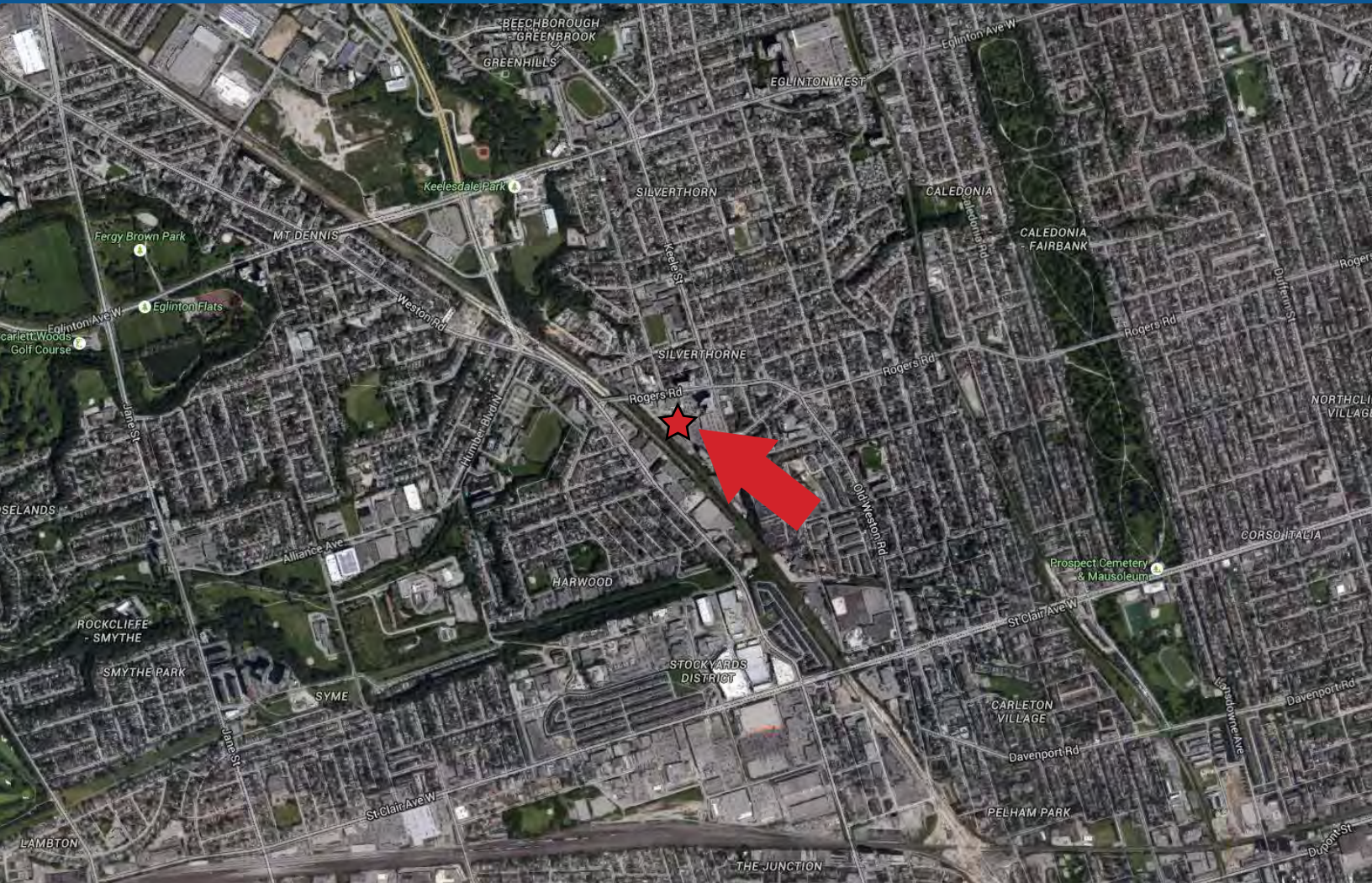
SITE PLAN

605 ROGERS ROAD, TORONTO, ON



AERIAL & SITE DETAILS

605 ROGERS ROAD, TORONTO, ON



DETAILS:

- Prime Toronto location at Keele & Rogers Road benefiting from excellent access, parking, and traffic.
- Highly underserved urban Toronto location
- Densely populated and growing market serving 168,000 people in the primary trade area (3 kms)
- Join many other national and well established local retailers including A&W, Dollarama, Value Village, Bank of Montreal, Hakim Optical, Martins Restaurant, Subway, Osmow's, ILoveKickBoxing, etc.
- Prominent signage opportunity.

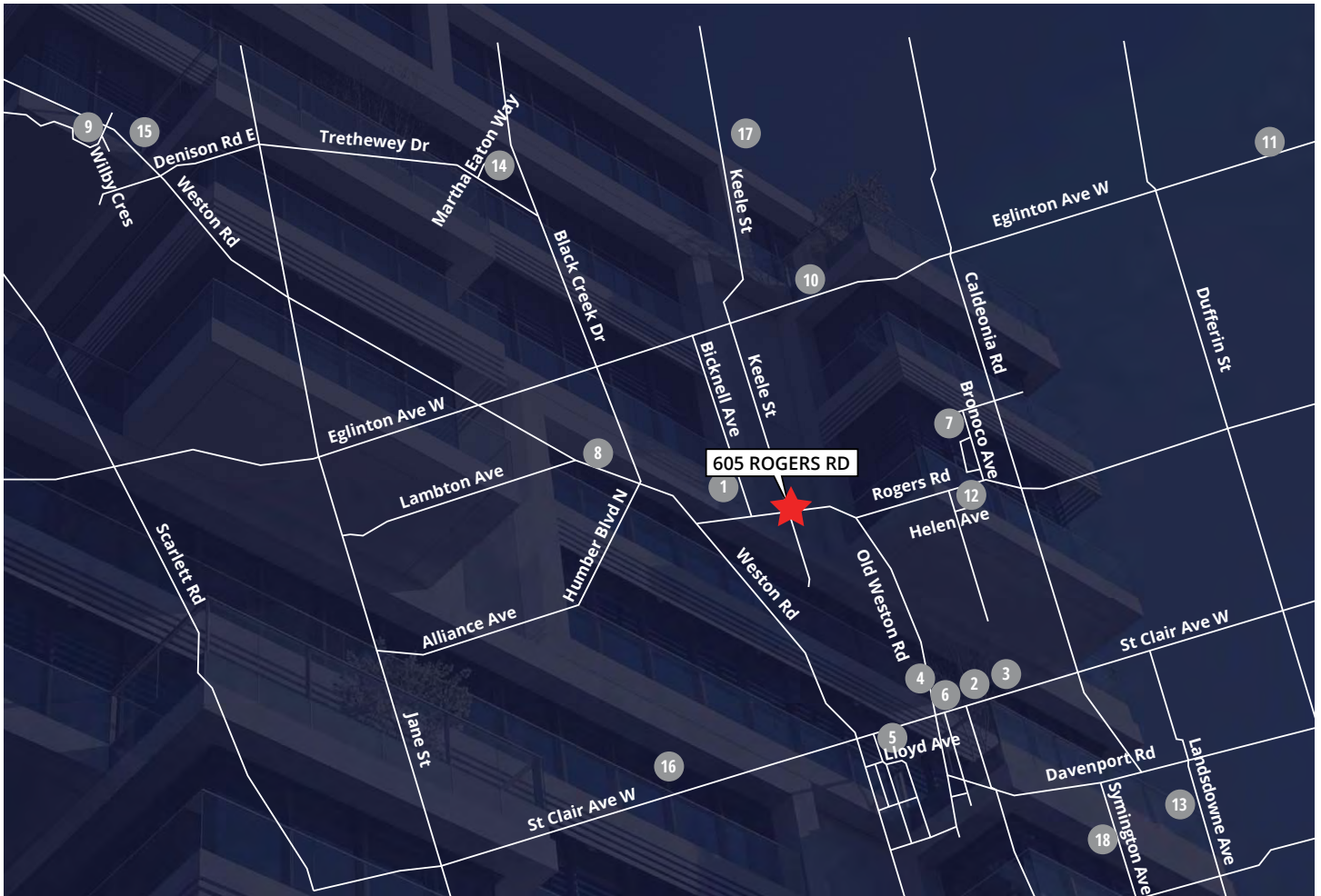
TRAFFIC COUNTS:

(PiinPoint Demographics Average Daily Traffic 2012)

- Rogers Road : 21,498
- Weston Road : 43,812
- Keele Street : 34,658

AREA DEVELOPMENTS

605 ROGERS ROAD, TORONTO, ON



AREA DEVELOPMENTS

1. 2 Bicknell Avenue	62 units	7. 150 Bronoco Ave	28 units	13. 980 Lansdowne Ave	971 units
2. 1779 St. Clair Ave W	72 units	8. 955 Weston Road	71 units	14. 15 Martha Eaton Way	155 units
3. 1771 St Clair Ave	274 units	9. 10 Wilby Crescent	234 units	15. 1695 Weston Road	240 units
4. 383 Old Weston Road	126 units	10. 2280 Eglington Ave W	122 units	16. 2306 St. Clair Ave W	267 units
5. 6 Lloyd Ave	478 units	11. 1603 Eglington Ave W	219 units	17. 2175 Keele Street	244 units
6. 1791 St. Clair Ave W	261 units	12. 2 Helen Ave	5 units	18. 386-394 Symington Ave	372 units
				Total	4,201 units

DEMOGRAPHICS

605 ROGERS ROAD, TORONTO, ON

2017 Demographic Snapshot	605 Rogers Rd, York, ON M6M 1B9 0 - 2 km		605 Rogers Rd, York, ON M6M 1B9 0 - 5 km	
		%		%
Total Population				
2012 estimated	71,552		457,709	
2017 estimated	73,934		474,149	
2022 Projected	76,319		491,863	
% Pop. Change (2012-2017)	3.3%		3.6%	
% Pop. Change (2017-2022)	3.2%		3.7%	
2017 Total Population by Age	73,934		474,149	
0 to 4 years	4,079	5.5%	25,378	5.4%
5 to 19 years	11,002	14.9%	67,100	14.2%
20 to 24 years	5,266	7.1%	29,224	6.2%
25 to 34 years	11,304	15.3%	80,595	17.0%
35 to 44 years	11,511	15.6%	73,691	15.5%
45 to 54 years	10,909	14.8%	66,552	14.0%
55 to 64 years	9,711	13.1%	58,181	12.3%
65 to 74 years	5,479	7.4%	37,303	7.9%
75 years & over	4,671	6%	36,125	8%
Median Age	39.2		39.4	
2017 Total Census Families	18,708		120,323	
Average Persons Per Family	3.0		2.9	
Total Couples	13,630	72.9%	93,336	77.6%
Without children at home	5,134	27.4%	40,488	33.6%
With children at home	8,496	45.4%	52,848	43.9%
Lone-parent families	5,078	27.1%	26,987	22.4%
Children Per Census Family	1.2		1.1	
2017 Educational Attainment (15 years+)	62,599		397,121	
Less than a bachelor degree	53,507	85.5%	270,016	68.0%
Bachelor degree & higher	9,092	14.5%	127,105	32.0%
2017 Households	28,144		194,283	
Persons per household	2.62		2.40	
Average household income	\$ 75,514		\$ 108,951	
2017 Occupied Dwellings	28,144		194,283	
Owned dwellings	15,454	54.9%	100,799	51.9%
Rented dwellings	12,689	45.1%	93,485	48.1%