

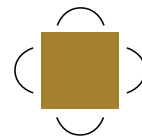
PREMIUM PROFESSIONAL & MEDICAL SUITE AVAILABLE FOR LEASE

1685 MAIN STREET WEST, HAMILTON, ONTARIO



Len Goudy

Broker of Record
Goudy Real Estate Corp.
Real Estate Brokerage
(416) 830-0880



Goudy Real Estate Corp.
Real Estate Brokerage
Commercial Real Estate
Sales & Leasing

14 Bigwood Court, Toronto, ON M1H 1Z9 | (905) 477-3000

The information contained herein has been provided to Goudy Real Estate Corp. by others. We do not warrant its accuracy. You are advised to independently verify the information prior to submitting an Offer and to provide for sufficient due diligence in an offer. The information contained herein may change from time to time without notice. The property may be withdrawn from the market at any time without notice.

DETAILS

1685 MAIN STREET WEST



DETAILS:

Strategically positioned at the signalized gateway to West Hamilton, Ancaster, and Dundas, this move-in-ready suite offers a premier opportunity for medical practitioners and professional firms. Located within a high-traffic hub just 5 minutes from McMaster University and Hospital, your business will benefit from exceptional exposure and an established community draw.

Features:

Move-In Ready Layout: Featuring 6 private offices/consultation rooms, providing an efficient footprint for clinical, healthcare, or executive administrative use.

Professional Synergy: Join a prestigious community of established tenants, including medical, dental, and financial professionals.

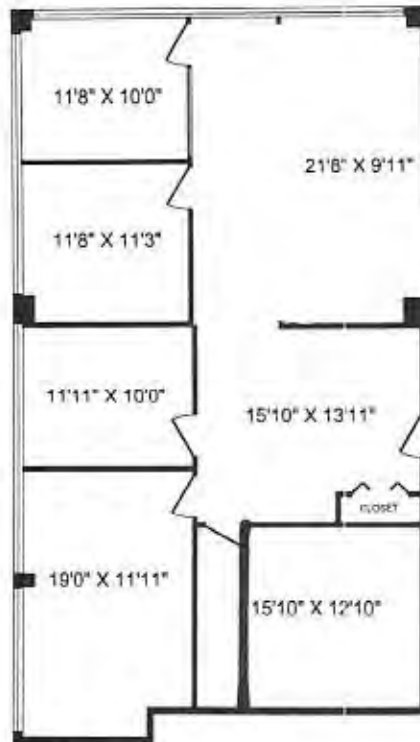
Unrivaled Accessibility: Immediate access to major transit and commuter routes with plentiful on-site parking for both staff and patients/visitors.

High-Traffic Retail Proximity: Located in a vibrant complex with national brands like Crunch Fitness, BioPed, and Booster Juice, ensuring a steady flow of daily foot traffic.

Prime Demographics: Situated directly across from a 450-unit student residence and within walking distance of local schools, serving a diverse mix of residents, students, and daytime workers.

UNIT 303 FLOOR PLAN

1685 MAIN STREET WEST

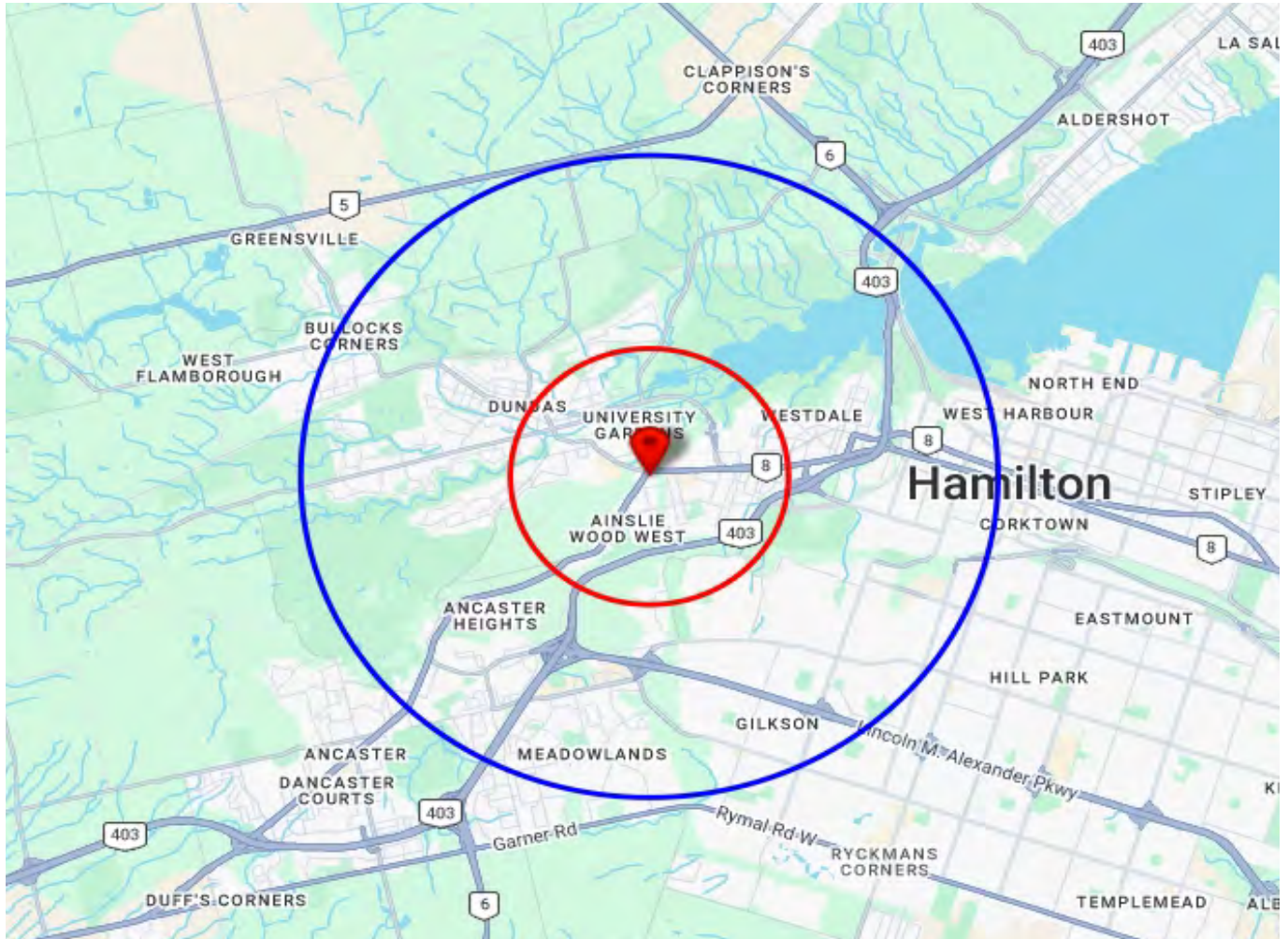


AVAILABLE UNIT DETAILS:

UNIT 303	1,810 Sq. Ft.
RENT	\$30.00 PSF PA GROSS

TRADE AREA MAP

1685 MAIN STREET WEST



2025 Daytime Population	1685 Main St W, Hamilton, ON L8S 0A2 0 - 2 km		1685 Main St W, Hamilton, ON L8S 0A2 0 - 5 km	
		%		%
Total Estimated Population	19,693		140,614	
Total Daytime Population	15,983		122,832	
Daytime Population at Home	9,544	59.7%	67,053	54.6%
0 to 14 years	2,054	12.9%	18,301	14.9%
15 to 64 years	4,025	25.2%	25,739	21.0%
65 years and over	3,465	21.7%	23,013	18.7%
Daytime Population at Work	6,924	43.3%	56,870	46.3%
Work At Usual Place	4,466	27.9%	37,881	30.8%
Work Mobile	834	5.2%	6,877	5.6%
Work At Home	1,625	10.2%	12,112	9.9%

DEMOGRAPHICS

1685 MAIN STREET WEST

2025 Demographic Snapshot	1685 Main St W, Hamilton, ON L8S 0A2 0 - 2 km		1685 Main St W, Hamilton, ON L8S 0A2 0 - 5 km	
		%		%
Total Population				
2020 estimated	18,167		129,583	
2025 estimated	19,693		140,614	
2030 Projected	20,713		146,863	
% Pop. Change (2020-2025)	8.4%		8.5%	
% Pop. Change (2025-2030)	5.2%		4.4%	
2025 Total Population by Age	19,693		140,614	
0 to 4 years	752	3.8%	5,874	4.2%
5 to 19 years	2,150	10.9%	19,914	14.2%
20 to 24 years	2,238	11.4%	11,362	8.1%
25 to 34 years	3,910	19.9%	23,719	16.9%
35 to 44 years	2,260	11.5%	18,739	13.3%
45 to 54 years	1,761	8.9%	15,312	10.9%
55 to 64 years	2,101	10.7%	16,638	11.8%
65 to 74 years	2,199	11.2%	15,235	10.8%
75 years & over	2,323	12%	13,821	10%
Median Age	38.2		39.7	
2025 Total Census Families	4,241		34,589	
Average Persons Per Family	2.8		3.0	
Total Couples	3,393	80.0%	28,404	82.1%
Without children at home	1,923	45.3%	13,922	40.3%
With children at home	1,470	34.7%	14,482	41.9%
Lone-parent families	849	20.0%	6,185	17.9%
Children Per Census Family	0.9		1.1	
2025 Educational Attainment (15 years+)	16,715		118,984	
Less than a bachelor degree	9,783	58.5%	71,231	59.9%
Bachelor degree & higher	6,932	41.5%	47,753	40.1%
2025 Households	8,783		56,699	
Persons per household	2.13		2.42	
Average household income	\$ 110,073		\$ 138,671	
2025 Occupied Dwellings	8,783		56,699	
Owned dwellings	4,055	46.2%	32,385	57.1%
Rented dwellings	4,728	53.8%	24,314	42.9%

DEMOGRAPHICS

1685 MAIN STREET WEST

2025 Estimates Visible Minority	1685 Main St W, Hamilton, ON L8S 0A2 0 - 2 km		1685 Main St W, Hamilton, ON L8S 0A2 0 - 5 km	
		%		%
2025 Household Population by visible minority groups	18,738	%base	137,229	%base
Total visible minority population	5,375	28.7%	41,712	30.4%
Chinese	1,178	6.3%	6,134	4.5%
South Asian	1,731	9.2%	9,664	7.0%
Black	843	4.5%	7,113	5.2%
Filipino	175	0.9%	2,427	1.8%
Latin American	228	1.2%	3,073	2.2%
Southeast Asian	169	0.9%	1,741	1.3%
Arab	535	2.9%	4,844	3.5%
West Asian	213	1.1%	2,530	1.8%
Korean	72	0.4%	1,389	1.0%
Japanese	46	0.2%	493	0.4%
Visible minority, n.i.e.	76	0.4%	642	0.5%
Multiple visible minorities	108	0.6%	1,661	1.2%
Not a visible minority	13,363	71.3%	95,517	69.6%

2028 Projections Visible Minority	1685 Main St W, Hamilton, ON L8S 0A2 0 - 2 km		1685 Main St W, Hamilton, ON L8S 0A2 0 - 5 km	
		%		%
2028 Household Population by visible minority groups	19,200	%base	140,412	%base
Total visible minority population	5,809	30.3%	44,995	32.0%
Chinese	1,276	6.6%	6,579	4.7%
South Asian	1,894	9.9%	10,569	7.5%
Black	889	4.6%	7,471	5.3%
Filipino	187	1.0%	2,606	1.9%
Latin American	246	1.3%	3,316	2.4%
Southeast Asian	180	0.9%	1,843	1.3%
Arab	582	3.0%	5,302	3.8%
West Asian	238	1.2%	2,875	2.0%
Korean	74	0.4%	1,497	1.1%
Japanese	48	0.2%	511	0.4%
Visible minority, n.i.e.	80	0.4%	668	0.5%
Multiple visible minorities	116	0.6%	1,757	1.3%
Not a visible minority	13,391	69.7%	95,417	68.0%